

STOP!

**Do not install until you have read these instructions
Call 800.465.6909 with any questions**

HANDLING AND INSTALLATION INSTRUCTIONS

Maya Romanoff 54™ Komodo Type II Vinyl Wallcovering
(MR-FV-01 series)

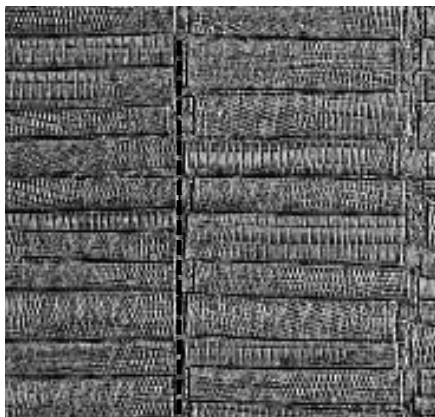
PLEASE CHECK PRODUCT BEFORE CUTTING

See reverse for guidelines and installation instructions!

Recommended seaming for
Komodo™ Type II Vinyl Wallcovering

YES

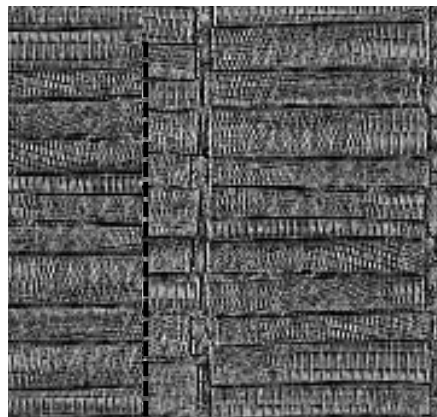
Do seam Komodo on
vertical "grout" of pattern



correct seam placement

NO

Do Not seam Komodo
between horizontal strips
of pattern



incorrect seam placement



STOP!

**Do not install until you have read these instructions
Call 800.465.6909 with any questions**

HANDLING AND INSTALLATION INSTRUCTIONS

Maya Romanoff 54™ Komodo Type II Vinyl Wallcovering
(MR-FV-01 series)

PLEASE CHECK PRODUCT BEFORE CUTTING

General Guidelines

- Inspect goods carefully for any defects. No credits or claims if defective material is hung.
- Confirm that you have the correct color and product before installing. Additional yardage from this dye lot may not be available.
- No claims allowed under any conditions for labor charges or consequential damages.
- **No allowances for more than three drops on the wall.** No returns on cut goods.
Stop and call 800.465.6909 immediately if you encounter any difficulties.

Installation Instructions

- Inspect for defects and double check color and product before cutting.
- Before hanging wallcovering, prime and prepare walls accordingly. Walls should be mirror-smooth.
- Use only a quality, undiluted premixed strippable vinyl adhesive. Remove any excess adhesive immediately with warm water. If excess paste is not removed, permanent damage could result to face of the wallcovering.
- When installing a textured wallcovering, reversing alternate strips may help minimize subtle shading caused by reproduction of natural materials.
- Wallcovering rolls are marked numerically. Please hang in sequence.
- To clean and care for wallcovering, use mild soap and water and a non-abrasive sponge.
- Walls should be free of dirt, mold, and mildew prior to installation. Further, conditions that allow moisture infiltration to get into walls should be corrected prior to installation. Consult with a professional.
- If you have any questions before proceeding, stop and call Customer Service at 800.465.6909.

06/12/08 Page 2



MAYA ROMANOFF

Chicago Headquarters: 3435 Madison, Skokie, IL 60076 † 1.773.465.6909 † 1.773.465.7089 www.mayaromanoff.com